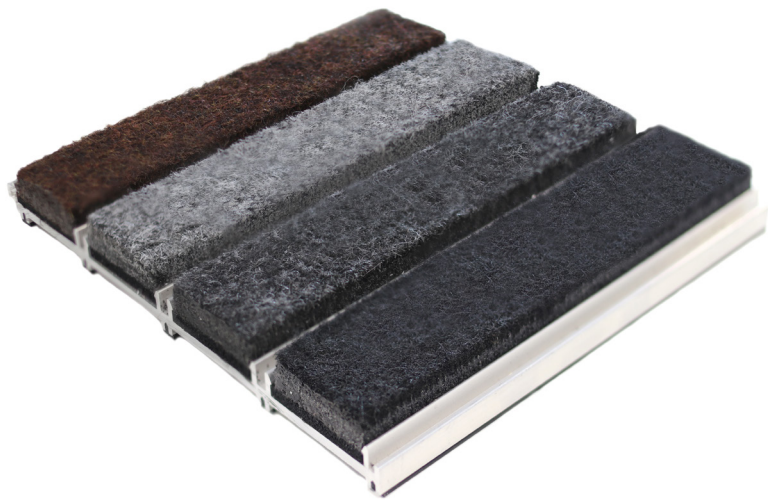




Grid System

Kleen-Fit Guard DC001

Fibre Bonded Polypropylene Infill

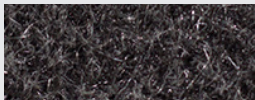




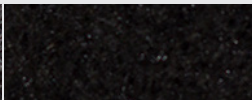
Standing strong against heavy foot traffic

An entrance matting system designed to handle high levels of foot traffic and heavy usage, made of dense material that is able to resist and endure even the toughest conditions.

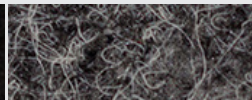
Why Choose DC001?	Technical Details	Sizing
<ul style="list-style-type: none"> » High moisture control » Hard wearing and durable » High foot traction » Easy to clean dirt collection channel » Suitable for indoor and outdoor use » Bespoke manufacturing to specification » Made with recycled content » 10 years Manufacturers Guarantee » Made in Britain 	<p>Materials</p> <ul style="list-style-type: none"> » Heavy duty fibre bonded polypropylene infill » Minimum 95% recycled aluminium grid <p>Applications</p> <ul style="list-style-type: none"> » Heavy foot traffic areas » Sports venues subject to spikes and studs <p>Certifications</p> <ul style="list-style-type: none"> » ISO9001:2008 » ISO 105-B02:2014 - 6 » ISO 105- X12 - 4 » BS8300 DDA Regulations » BS4790:1987 (1996) » ISO 105-E01 - 5 	<p>Infill Height</p> <ul style="list-style-type: none"> » Low Profile - 12 mm » Standard Profile - 17 mm <p>Panel Widths</p> <ul style="list-style-type: none"> » Up to 4000 mm <p>Length</p> <ul style="list-style-type: none"> » Modular - no maximum length



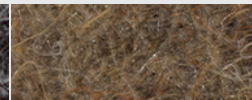
Anthracite



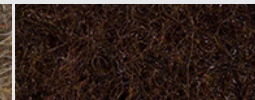
Black



Grey



Beige



Brown

Colours are subject to commercial tolerance.

Full Technical Data



For more information, please contact our Customer Service Team:

T: +44 (0)1204 70 50 70

E: info@kleen-tex.co.uk

